

**DRIVEN BY TRADITION.  
DEFINED BY EXCELLENCE.**

**2025 | ANNUAL REPORT**

ON THE COVER

# Cleveland Avenue Safety Improvements

## Engineering Safer Journeys for Everyone



**Completed:** December 31, 2025  
**Contractor:** Strawser Paving  
**Budget:** \$4,701,288.03

Designed with safety at the forefront, the Cleveland Avenue improvement project reimagined a busy corridor between Elmore Avenue and Melrose Avenue to better protect drivers and pedestrians alike.

The project introduced upgraded traffic signals at Huy Road and Elmore Avenue, including new concrete medians with clearly marked crosswalks and rectangular rapid flash beacons and targeted lane modifications to calm traffic and improve flow.

Additional upgrades included roadway resurfacing and lighting improvements along Cleveland Avenue from Huy Road to Cooke Road as well as resurfacing on Innis Road with a new concrete median to better manage access. At key intersections, enhanced crosswalks now feature overhead pedestrian warning signs, solar-powered flashing beacons, and pedestrian refuge islands. Together, these improvements create a safer, more intuitive corridor that supports daily travel and strengthens neighborhood connectivity.

“WITH INCREASED TRAFFIC IN THE COMMUNITY, REDUCING LEFT-HAND TURNS ALONG THE CORRIDOR HAS BEEN CRITICAL IN IMPROVING SAFETY AND DECREASING THE NUMBER OF SERIOUS CRASHES AND FATALITIES.”

*Tony McClendon*

Construction Technician IV

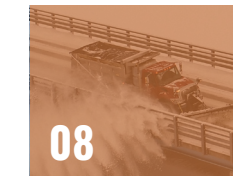
## WHAT'S INSIDE? >



04 Supporting a Growing Franklin County



06 Executive Team



08 Did you Know?



09 Survey, Tax Map, & Records



10 Asset Management and GIS



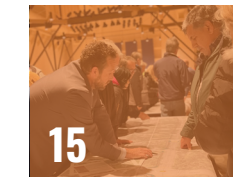
11 Highway Design & Construction



12 Highway & Resurfacing Projects



14 Human Resources & Information Systems



15 Planning and Programming & Real Estate



16 Highway Maintenance



18 Bridge Maintenance



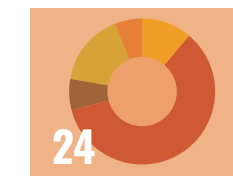
21 Drainage



22 Mobility



23 Fleet and Building & Grounds



24 Utilities & Fiscal Update



25 Safety & Security



26 Diversity & Outreach



27 2025 Impact



“EVERYTHING WE DO IS FOCUSED ON KEEPING FRANKLIN COUNTY MOVING SAFELY.”

*Adam Fowler, P.E., P.S.*  
Franklin County Engineer

# Supporting a GROWING FRANKLIN COUNTY

4  
LOCATIONS



Since Franklin County's founding in 1803, the Franklin County Engineer's Office has played a critical role in building and maintaining the transportation network that keeps the county moving. Today, the office oversees roads, bridges and drainage infrastructure that support all modes of travel. Through the coordinated efforts of engineering, surveying, construction and maintenance teams, staff work year-round and in all conditions to keep residents and visitors safe.

Franklin County is home to more than 1.35 million residents today, and Central Ohio is projected to exceed 3 million people by 2050. As the region grows, the office's role is critical to ensuring long-term planning and sustained investment in safe, reliable infrastructure that keeps people and goods moving every day.

### MAIN OFFICE

970 Dublin Rd.  
Columbus, OH 43215  
614-525-3030

### WEST MAINTENANCE

4444 Fisher Rd.  
Columbus, OH 43228  
614-525-6780

### EAST MAINTENANCE

4801 Hendron Rd.  
Groveport, OH 43125  
614-525-6803

### TAX MAP OFFICE

373 South High St.  
Columbus, OH 43215  
614-525-3084



ADAM W. FOWLER, P.E., P.S.  
Franklin County Engineer

## To the Residents and Board of Commissioners of Franklin County,

On behalf of the dedicated team at the Franklin County Engineer's Office, I am pleased to present our 2025 Annual Report. This report highlights the work, progress, and accomplishments achieved over the past year as we continue our commitment to maintaining and improving the county's infrastructure.

Infrastructure is more than pavement and structures — it connects neighborhoods, supports commerce, and strengthens communities. Over the past year, the Engineer's Office has remained focused on improving safety, increasing mobility, and investing wisely in the infrastructure that serves our community now while laying the foundation for the years ahead. Maintaining and improving this infrastructure requires careful planning, strong partnerships, and the dedication of the engineers, surveyors, and staff who serve the residents of Franklin County each day.

I am grateful for the opportunity to continue to serve the residents of Franklin County and remain committed to advancing projects that support the county's ongoing growth and success. I look forward to continuing collaborations with our team, partners, and community to build a safe, connected, and thriving Franklin County.

Sincerely,

*Adam W. Fowler, P.E., P.S.*  
Franklin County Engineer

# Executive Team



**Adam W. Fowler, P.E., P.S.**

County Engineer



**Elizabeth Kuhn**

Executive Assistant



**Wm. Fritz Crosier, P.E.**

Chief Deputy of Engineering



**Brad Foster, P.E., P.S.**

Chief Deputy of Operations



**Dana Bushong**

Director of Human Resources



**Nick Soulas**

Government Affairs Liaison



**Brent Welch**

Chief Financial Officer



**Matt Balster**

Chief Maintenance Officer



**Greg Thomas**

First Responder Liaison

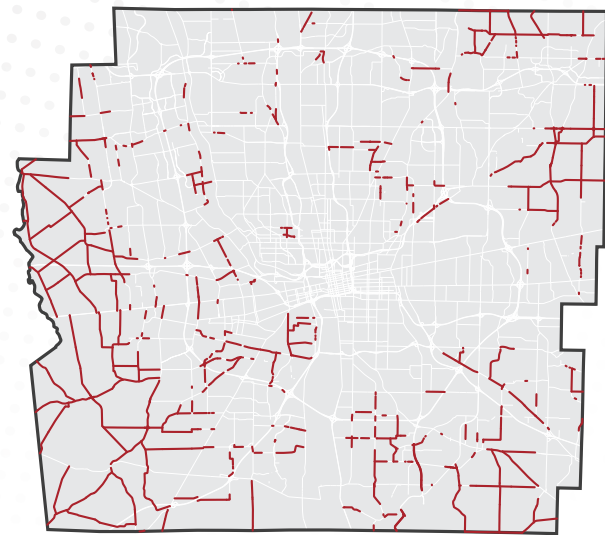


**186** 

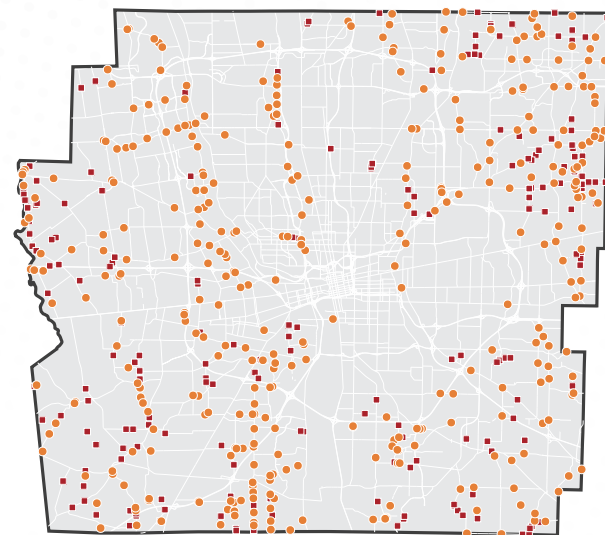
**STAFF MEMBERS ON THE FCEO TEAM IN 2025**

# Did You Know

When you pass a sign that reads "Franklin County," you are traveling on a roadway managed by the Franklin County Engineer's Office. In addition to maintaining county roads, the Office builds and maintains bridges and culverts, conducts land surveys, and manages drainage systems designed to reduce flooding, prevent erosion, and protect water quality. The maps below represent FCEO maintained infrastructure.



— Roads



● Bridges ■ Culverts

The Franklin County Engineer's Office dedicated **7,312 labor hours to winter operations in 2025**

**100+ members** of the Franklin County Engineer's Office snow and ice operations crews, known as the **'Snowfighters'**, work around the clock to maintain safe travel on **850 lane miles** of roads and streets and provide road salt and anti-icing materials to **32 communities and public agencies**

**357**  
The number of bridges the FCEO maintains.  
**One for almost every day of the year!**



## Survey, Tax Map, & Records

The Survey, Tax Map, and Records teams are the backbone of Franklin County's real estate and right-of-way information. The teams provide trusted data on property lines, right-of-way boundaries, and historic parcel records by working closely with homeowners, surveyors, attorneys, and consultants. Each group brings a distinct expertise – from managing public land survey system monumentation and right-of-way data to preserving historical records and maintaining accurate parcel mapping. Together, the department is transforming centuries of paper records into a modern digital mapping environment, making county map information available in real time with just a click.



left to right, Jay Rhoden, P.S., Survey Administrator and Tony Rettke, P.S., Director of Surveying & Tax Map

**3,667**  
HOURS IN THE FIELD

**1842**  
THE YEAR FRANKLIN COUNTY'S TAX MAPS DATE BACK TO

# Asset Management

## MANAGING THE DETAILS THAT MATTER

The Asset Management Department oversees the assets of the Franklin County Engineer's and Franklin County Drainage Engineer's offices with a focus on maximizing value and minimizing risk. The team identifies and evaluates key assets, manages them under the Franklin County Engineer's data governance framework, and uses long-term planning, financial analysis, and clear reporting to ensure public investments are managed responsibly and aligned with strategic goals.



Mark Williams, Asset Manager

# Highway Design

The Highway Design Department plans and develops Franklin County roadway projects, including scoping, reviewing, and preparing capital improvement designs for bidding. The team also coordinates with developers and partner agencies, maintains design standards, and creates in-house plans to deliver safe, efficient roadway solutions.

## 18 CONTRACTS

Capital Improvements Program (CIP)

## 10 PROJECTS

Delivered to Construction



Left to right: Fritz Crosier, P.E., Chief Deputy of Engineering, Jeremy Bresciani, P.E., S.I., Assistant Highway Design Engineer, Matt Rehfus, P.E., S.I., Highway Design Engineer at a Public Meeting



## GEOGRAPHIC INFORMATION SYSTEMS (GIS)

The Geographic Information Systems (GIS) team supports nearly every function of the Franklin County Engineer's Office by maintaining critical mapping systems used for planning, operations, and emergency response. In addition to producing the county's highway map and atlas, including a new 2025 edition, the first under County Engineer Adam W. Fowler, the team manages township maps, emergency action plan maps, and snow route maps while providing GIS support for the Franklin County Drainage Engineer and asset management systems. In 2025, the focus was on preparing and migrating key datasets to a cloud-based environment, laying the groundwork for more innovative and efficient GIS tools. Though small in size, the team's impact is countywide and beyond, maintaining accurate mapping for all roadway systems and hydrology that interact with Franklin County.

### 35,440 MAPS DISTRIBUTED

### 4,838 BRIDGES, CULVERTS AND DRAINAGE ASSETS ADDED OR UPDATED IN GIS

### 224 DATASETS MANAGED BY THE GIS TEAM



Brad Jones, P.E., Assistant Construction Services Engineer

# Construction Services

The Construction Services Department oversees construction to ensure projects are built according to plan, on time, and to quality standards. Through inspections, testing, and close coordination with the FCEO's engineering departments, the team helps bring infrastructure projects to life safely and efficiently.

## 13 CONTRACTS

Capital Improvements Program (CIP)

# Highway & Resurfacing Projects

“AS STEWARDS OF THE COUNTY’S INFRASTRUCTURE, WE RECOGNIZE THE RESPONSIBILITY ENTRUSTED TO US TO SERVE THE PUBLIC AND DELIVER ESSENTIAL IMPROVEMENTS THAT SUPPORT SAFETY, MOBILITY, AND ECONOMIC VITALITY. I AM PROUD OF OUR TEAM’S PASSION, PROFESSIONALISM, AND COMMITMENT TO PROVIDING THE SERVICES OUR RESIDENTS DEPEND ON EVERY DAY.”

*W. Fritz Crosier* Chief Deputy of Engineering



## HIGHWAY PROJECTS



**Case Road Area Storm Sewer Replacement**

Removed and replaced storm sewer along Minnie Avenue, Case Road, Sale Road, and Dresden Street, including lead/galvanized water service line replacements

**Completed:** December 31, 2025  
**Contractor:** Elite Excavating Company of Ohio, Inc.  
**Budget:** \$1,152,742.21



**Norwich Township Safety Services Building Parking Lot (Phases 2, 3, and 4)**

Removed and replaced a portion of the concrete parking lot and driveway at the Norwich Township Safety Services Building

**Completed:** September 30, 2025  
**Contractor:** Newcomer Concrete  
**Budget:** \$661,561.04



**Frank Road at Brown Road / Hardy Parkway Street MELP Relocation**

Relocated existing City of Columbus MELP (Municipal Electric Light Plant) facilities to install new poles in advance of the construction of the Frank Road at Brown Road/Hardy Parkway Street & Brown Road (Township) Roundabouts Improvement Project

**Completed:** December 10, 2025  
**Contractor:** U.S. Utility Contractor Co.  
**Budget:** \$567,393.75



**Renner Road (Alton & Darby Creek Road to Spindler Road)**

Widened and replaced 0.75 miles of asphalt pavement and resurfaced Renner Road between Alton & Darby Creek Road and Spindler Road; improvements include earthwork, storm sewer, shared-use path, sidewalk, traffic signal, traffic control devices, and the replacement of the existing bridge over Clover Groff Ditch

**Completed:** October 31, 2025  
**Contractor:** J&J Schlaegel, Inc.  
**Budget:** \$4,820,239.45



## RESURFACING PROJECTS



**2025 County Resurfacing Program**

Upgraded 4.918 miles of various sections of Franklin County roadways

**Completed:** November 11, 2025  
**Contractor:** Kokosing Construction Company  
**Budget:** \$2,217,301.23



**2025 Township Resurfacing Program**

Upgraded various sections of Franklin County township roadways with asphalt resurfacing, curb, and sidewalk replacement

**Substantially Complete:** October 31, 2025  
**Contractor:** The Shelly Company  
**Budget:** \$3,697,662.51

“OUR MAINTENANCE CREWS TAKE A LOT OF PRIDE IN MAINTAINING FRANKLIN COUNTY’S ROADWAYS, AND IT’S SOMETHING YOU CAN SEE AND FEEL EVERY TIME YOU DRIVE ON ONE OF OUR ROADS.”

*Brad Foster*

Chief Deputy of Operations

# Human Resources

Our Human Resources Department manages the entire employee lifecycle, from recruiting, hiring, and onboarding to training, compensation, benefits, employee relations, and offboarding, ensuring compliance with laws, fostering positive culture, and aligning staff with organizational goals. The HR team handles payroll, policies, performance management, and serves as a vital resource for employee concerns and development, supporting both individuals and organizational growth.

**20**  
NEW HIRES

**4**  
JOB FAIRS ATTENDED



Dana Bushong, Director of Human Resources at a Career Fair



Val Eskin, Informations Systems Manager

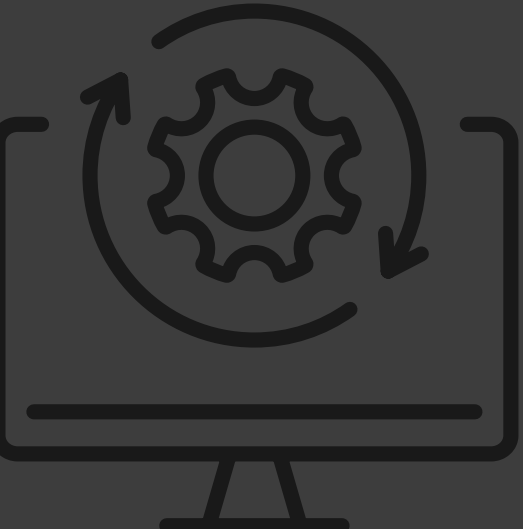
# Information Systems

IS manages the technology, data, and processes that help the FCEO run, focusing on integrating IT solutions with business goals by handling hardware, software, networks, security, and user support.

**187,000**  
SPAM EMAILS BLOCKED

**2,653**  
CYBER SECURITY THREATS DETECTED AND RESOLVED

**14**  
TRAINING SESSIONS



# Planning & Programming



The Planning and Programming Department supports the Franklin County Engineer's Office by securing funding partnerships with federal, state, and local jurisdictions, managing the design consultant selection and evaluation process, tracking consultant costs, coordinating the Capital Improvement Program budget, and administering the disbursement of permissive tax fees. In 2025, the FCEO received **\$25,000,000 for the FY25 USDOT BUILD grant** for a project to widen Alum Creek Drive, adding a third through lane in each direction between State Route 317 (London-Groveport Road) and Groveport Road, spanning approximately 2.6 miles.

**\$37M**  
AWARDED IN GRANT REVENUE

**275**  
INVOICES PROCESSED FOR A TOTAL OF \$7,321,113

**359**  
CONSTRUCTION PAYROLL REPORTS REVIEWED

**15**  
PROJECT SITES VISITED

**22**  
MEET AND GREET SESSIONS

# Real Estate



Jack Hughes, Real Estate Administrator at a Public Meeting

The Real Estate Department provides right-of-way acquisition services and real estate support for all Franklin County Engineer's Office construction projects as well as other county agencies. The team works closely with multiple departments across the office. The department also places a strong emphasis on professional development, with all staff attending a minimum of four International Right of Way Association (IRWA) training seminars in the past year, ensuring current knowledge of applicable federal, state, and local laws/regulations.

**137**  
TOTAL NUMBER OF PROPERTY OWNERS ENGAGED

**\$2.2M**  
THE TOTAL COST OF REAL ESTATE ACQUISITIONS

# Excellence in Action

The People Maintaining the Systems that Keep Our County Moving

“OUR CREWS ARE COMMITTED TO KEEPING OUR ROADWAYS SAFE AND RELIABLE. THEY'RE NOT JUST MAINTAINING INFRASTRUCTURE, THEY'RE PROTECTING THE COMMUNITY AND PREVENTING PROBLEMS BEFORE THEY HAPPEN, WHICH IS WHY INVESTING IN OUR ROADS AND OUR TEAM REMAINS A TOP PRIORITY.”

*Matt Balster*  
Chief Maintenance Officer

## HIGHWAY MAINTENANCE DEPARTMENT EAST MAINTENANCE FACILITY



“OUR JOB IS SIMPLE: KEEP THE ROADS SAFE. THAT MEANS FIXING POTHOLES, CLEARING STORM DRAINS AND TRIMMING OR REMOVING TREES SO DRIVERS CAN CLEARLY SEE ONCOMING TRAFFIC AND AROUND CURVES. WE WORK TO FIX PROBLEMS BEFORE THEY TURN INTO HAZARDS.”

*Kale Smith*  
Highway Maintenance, Equipment Operator I, East Maintenance

## HIGHWAY MAINTENANCE DEPARTMENT WEST MAINTENANCE FACILITY



“SNOW PLOWING AND SALTING THE ROADS IS ONE OF OUR MOST CRITICAL ROLES IN KEEPING RESIDENTS SAFE. EVEN WHEN IT'S STILL SNOWING AND CONDITIONS SEEM UNCHANGED, CREWS ARE ACTIVELY WORKING TO THE KEEP ROADS CLEAR.”

*Shawn Hubbard*  
Highway Maintenance, Equipment Operator III, West Maintenance

## HIGHWAY MAINTENANCE DEPARTMENT VACTOR CREW



“BY CLEARING STORM TILES AND CATCH BASINS OF DEBRIS AND BLOCKAGES, WE KEEP WATER FLOWING DURING HEAVY RAIN AND HELP PREVENT ROADWAY AND YARD FLOODING.”

*Stacey Strayer-Tuttle*  
Vactor Crew Foreman

BRIDGE MAINTENANCE



The Bridge Engineering and Maintenance team inspected and maintained 357 existing structures while also overseeing \$25 million in Capital Improvement Program bridge construction. Through force account project delivery, the team generated an estimated \$1.2 million in cost savings for the county.

“CLOGGED BRIDGE DRAINS MAY SEEM MINOR, BUT THEY CAN LEAD TO FLOODING AND HAZARDOUS ICE. THAT’S WHY MAINTENANCE MATTERS.”

*Kevin “KC” Hayes*  
Bridge Worker I



BRIDGE FORCE ACCOUNT PROJECTS



Old Haughn Road Over Holton Run

Bridge replacement with precast deck slabs on Redi-Rock abutments  
**Completed:** June 18, 2025  
**Budget:** \$170,601  
**Contractor:** FCEO Bridge Maintenance



Pontius Road Over Tributary of Little Walnut Creek

Replacement of pipe culvert  
**Completed:** November 7, 2025  
**Budget:** \$150,186  
**Contractor:** FCEO Bridge Maintenance



Winchester Pike Over Coble & Bowman Ditch

Culvert replacement and road widening to accommodate developers roadway cross section  
**Completed:** August 21, 2025  
**Budget:** \$240,594  
**Contractor:** FCEO Bridge Maintenance



Roberts Road Over Morris Ditch

Replacement of bridge with a four-sided box culvert  
**Completed:** October 3, 2025  
**Budget:** \$255,356  
**Contractor:** FCEO Bridge Maintenance

**98.6%** of the Franklin County bridges (352 of the 357) are rated **fair or better**

**74.5%** of the Franklin County bridges are rated **good, very good, or excellent**

**44** Franklin County bridges are over **100 years old**

**93** Franklin County bridges are over **75 years old**

**5** Franklin County bridges are rated in **poor condition**

**27** Franklin County bridges are rated in **fair condition**

**NO** Franklin County bridge is listed as being in **serious or critical condition**

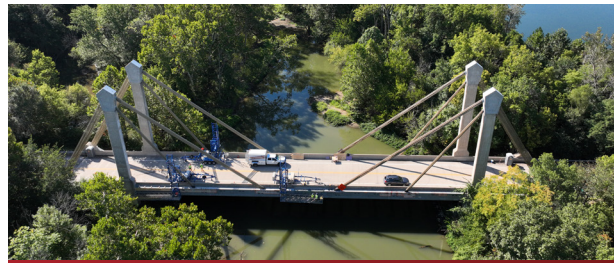
**NO** Franklin County bridge presents an immediate or potential danger to life or property



Bridge Engineer, Ed Herrick, P.E., at the Old Haughn Road bridge over Holton Run project.



# BRIDGE CAPITAL IMPROVEMENT PROJECTS



**Beach Road Over Big Darby Creek**  
*In Progress*

Rehabilitation of the Beach Road Bridge by investigating for grout voids in ducts, remedial grouting, and various other repairs

**Current Status:** 71% complete as of March 2026  
**Budget:** \$2,231,140  
**Contractor:** Structural Technologies LLC



**Trabue Road (Lakeshore Drive to Riverside Drive)**  
*In Progress*

Upgrading 0.285 miles of Trabue Road including rehabilitation and widening of two bridges, deck replacement, new approach slabs, semi-integral abutment conversion, sidewalks, shared-use path, and roadway resurfacing

**Current Status:** 50% complete as of March 2026  
**Budget:** \$14,769,507.24  
**Contractor:** Complete General Construction Company



**Eiterman Road Over South Fork Indian Run**  
*In Progress*

Completed bridge replacement of the existing Eiterman Road over South Fork Indian Run structure and extended the existing footprint to accommodate the future build-out

**Current Status:** 95% complete as of March 2026  
**Budget:** \$842,496  
**Contractor:** Shelly & Sands, Inc.



**West North Broadway Over Olentangy River**  
*In Progress*

Rehabilitation of the West North Broadway Bridge over the Olentangy River, including deck overlay, shared-use path and sidewalk improvements, abutment conversion, bearing and approach slab replacement, and wingwall upgrades

**Current Status:** 48% complete as of March 2026  
**Budget:** \$2,899,617  
**Contractor:** Complete General Construction Company



**Harrisburg-Georgesville Over Big Darby Creek**  
*In Progress*

Rehabilitation of the Harrisburg-Georgesville Road bridge over Big Darby Creek including the original decorative bridge railing detail

**Current Status:** 85% complete as of March 2026  
**Budget:** \$5,098,049  
**Contractor:** Complete General Construction Company



**General Bridge Maintenance**

**Hague Avenue over Barbee Ditch, Hayden Run Road over Hayden Run, and Norton Road over Hellbranch Run**

Applied concrete overlay to the bridge deck to rehabilitate the surface and extend service life

**Completed:** December 31, 2025  
**Budget:** \$570,164  
**Contractor:** Double Z Construction Company

# Drainage

“ MOST PEOPLE DON'T REALIZE HOW EASILY DRAINAGE SYSTEMS CAN GET BLOCKED. TREE ROOTS, DEBRIS, AND EROSION CAN ALL DISRUPT WATER FLOW, SO WE WORK TO KEEP THE SYSTEM CLEAR AND FUNCTIONING TO HELP PREVENT FLOODING. ”

*Alex Gibbs* Drainage Utility Worker III

# DRAINAGE MAINTENANCE



**Cosgray Road and Faust Ditch**

Restored drainage capacity of Faust Ditch north of Hayden Run Road by providing 0.74 miles of ditch maintenance and upgraded 2,628 feet of storm sewer along Cosgray Road from Rings Road to Faust Ditch

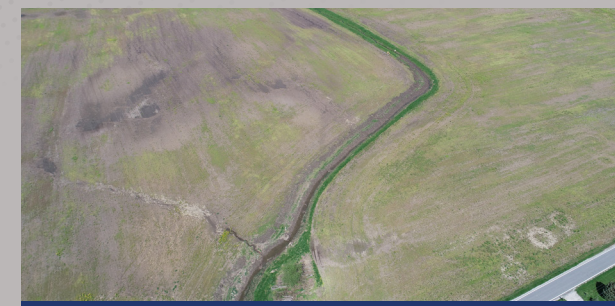
**Completed:** November 25, 2025  
**Contractor:** JLD Construction Services LLC  
**Budget:** \$1,047,645.30



**Kropp Road Drainage Outlet Part 1**

Installation of approximately 1,800 feet of storm sewer pipe west of Rolling Hills Subdivision and south of Kropp Road heading east to Krebs Ditch

**Completed:** November 17, 2025  
**Contractor:** Trucco Construction  
**Budget:** \$1,038,067



**Zuber Plum Run Part 1**

Installed 2,576 linear feet of drainage ditch improvements and profile grade restoration to address impairment by sediment deposition and allow major flood routing to function properly

**Completed:** November 14, 2025  
**Contractor:** V3 Construction Group Limited  
**Budget:** \$398,500



**Darling Road**

Installation of 850 feet of pipe in cooperation with Jefferson Township

**Completed:** June 13, 2025  
**Contractor:** FCEO Drainage Crew  
**Budget:** \$58,059

# Mobility



The Mobility Department is committed to providing safe and accessible mobility options for residents and visitors throughout Franklin County using all modes of transportation. The department ensures roadway signage, traffic signals, and pavement markings are maintained in excellent condition. The Mobility team works to preserve system capacity by adapting to changing traffic patterns and partnering with area developments on infrastructure improvements.

“THE MOST DANGEROUS TIME FOR OUR CREWS IS WHEN WE’RE SETTING UP WORK ZONES. PLEASE BE PATIENT, READ THE SIGNS, AND DON’T DRIVE THROUGH WET PAINT.”

*Todd Kistler*

Mobility Control Superintendent

**178** SIGNS INSTALLED  
**160** MILES OF ROADS RESTRIPIED  
**6,400** GALLONS OF WHITE AND YELLOW PAINT USED

## MOBILITY PROJECT



Proposed new sidewalks and improved crosswalks at four elementary schools

- **Brookside Elementary School**  
Worthington City Schools in Perry Township
- **Stiles Elementary School**  
South-Western City Schools in Prairie Township
- **West Franklin Elementary School**  
South-Western City Schools in Franklin Township
- **Worthington Hills Elementary School**  
Worthington City Schools in Perry Township

**Current Status:** Substantial Completion  
 December 31, 2025  
**Contractor:** Strawser Paving Co.  
**Budget:** \$700,356

# Fleet



The Fleet Department is responsible for the acquisition, fueling, maintenance, repair, and replacement of vehicles and equipment used across the agency. The department ensures all fleet assets are safe, reliable, and compliant with applicable standards, enabling staff to efficiently perform their duties in service to residents.

“FLEET KEEPS EVERYTHING RUNNING... SO OUR TEAM CAN STAY ON THE JOB AND KEEP THE WORK MOVING.”

*Darren Clark*

Auto Service Worker II

**669** VEHICLES IN THE FLEET  
**276** VEHICLES AND EQUIPMENT SERVICED  
**971K** MILES TRAVELED

# Building & Grounds

The Building Maintenance Department ensures the Franklin County Engineer’s Office operates efficiently and safely by maintaining and repairing all county-owned facilities, including office buildings, fleet areas, restrooms, and common spaces. The team manages everything from the basement to the roof, while the Grounds team oversees exterior upkeep, including landscaping, mowing, and event setup for the Franklin County Fair.



“MUCH OF OUR WORK HAPPENS BEHIND THE SCENES, BUT THE WHOLE ORGANIZATION DEPENDS ON IT. FROM MAINTAINING OUR FACILITIES AND GROUNDS, HANDLING DELIVERIES, SETTING UP EVENTS, AND MANAGING SNOW AND ICE REMOVAL, WE HELP KEEP THE FRANKLIN COUNTY ENGINEER’S OFFICE RUNNING SMOOTHLY.”

*Mike Maggard*

Building and Grounds Manager

# Utilities



Liz Pyles, Utilities Supervisor

The Utilities Department coordinates permits and inspections for all utility work within the public right-of-way, ensuring roadway and infrastructure projects move forward safely and on schedule. The department navigated a year of change marked by a key retirement and internal reorganization while successfully managing a high volume of utility relocations and right-of-way activity.

**35**  
UTILITY RELOCATION AND  
INSTALLATION PROJECTS  
supporting infrastructure work

**624**  
RIGHT-OF-WAY  
PERMITS ISSUED

# Fiscal Update

In 2025, the Fiscal Department ended the year in a strong financial position by effectively managing the budget from planning through year-end while balancing revenue and expenditures.



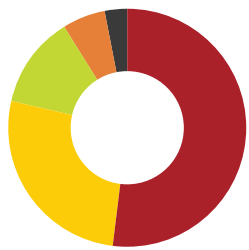
## BUDGET VS. ACTUAL

2025  
Revenue-Budget



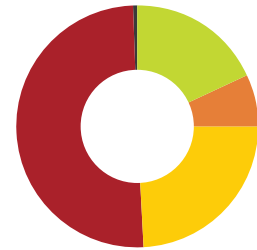
- \$35.5M Motor Vehicle Registrations
- \$25.5M State & Federal Grants
- \$14.4M Other Government Revenues
- \$4M Motor Vehicle Gas Tax
- \$7.6M Other Revenues

2025  
Revenue-Actual



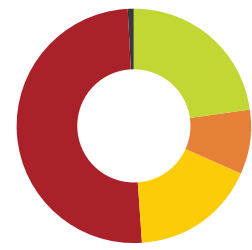
- \$35.7M Motor Vehicle Registrations
- \$18.2M State & Federal Grants
- \$8.5M Other Government Revenues
- \$4M Motor Vehicle Gas Tax
- \$2M Other Revenues

2025  
Expenditures-Budget



- \$47M Capital
- \$22.6M Materials & Services
- \$17M Payroll Services
- \$6.7M Fringe Benefits
- \$518,000 Debt Services

2025  
Expenditures-Actuals



- \$36M Capital
- \$16.4M Payroll Services
- \$12.4M Materials & Services
- \$6.4M Fringe Benefits
- \$436,000 Debt Services

# Safety

The Safety Department ensures a safe and compliant work environment across all FCEO operations by conducting inspections, delivering training, supporting project planning, and managing key safety programs. In 2025, the team strengthened safety practices through expanded training, updated equipment and PPE standards, and enhanced emergency preparedness efforts, continuing to reduce risk, support operations, and protect employee well-being.

**40**  
INCIDENTS REVIEWED  
THROUGH THE ACCIDENT  
REVIEW BOARD

**10**  
SAFETY IMPROVEMENTS  
IMPLEMENTED TO  
STRENGTHEN OPERATIONS



Safety Training

# Security

The Security Department plays a key role in protecting FCEO employees, facilities, and assets by supporting daily security needs and maintaining a safe and secure environment across all operations. Through ongoing monitoring and access control management, the department helps ensure the safety of teammates and the integrity of agency resources, contributing to a stable and incident-free workplace.

**36**  
ACCESS BADGES ISSUED  
TO SUPPORT SECURE  
FACILITY ACCESS

**0**  
SECURITY INCIDENTS  
REPORTED IN 2025



Brandon Flynn, Security Supervisor

# Diversity & Outreach

The Diversity & Outreach Department serves as a vital connection between the Franklin County Engineer's Office and the communities it serves, focusing on meaningful outreach, engagement, and clear communication. The department leads and supports a wide range of initiatives, including community outreach events, student and workforce development programs, and partnerships with local organizations, while also overseeing internal efforts such as mentorship, onboarding, and employee engagement. In addition, the team manages key communication functions including social media, public information, and resident notifications, and major events like the FCEO Touch-And-Ride-A-Truck and Student Engagement Day. Through strategic planning, brand development, website management, and coordination of agency-wide initiatives, the department ensures consistent messaging, strengthens community relationships, and enhances transparency and accessibility across all FCEO operations.

## 2025 Event Highlights

### FCEO TOUCH-AND-RIDE-A-TRUCK



### HILLIARD HORIZON ELEMENTARY TRAFFIC SIGN CONTEST



# 2025 IMPACT

The Franklin County Engineer's Office is excited to share that \$1.5 million in federal funding has been awarded via Community Project Funding supported by Congresswoman Joyce Beatty to support three key roadway improvement projects in our community: the Havens Corners Road at Taylor Station Road and Mann Road Roundabout, the Cooke Road Corridor (Glenmawr Avenue to Karl Road), and Morse Road (Johnstown Road to Reynoldsburg-New Albany Road) Improvement Projects. These investments will help improve safety, reduce congestion, and enhance connectivity for residents, businesses and travelers throughout the area.

**3,730**  
acres mowed

**16 tons**  
of litter

collected from county roadways, enough to fill nearly three garbage trucks

**DEC 4**  
**2025**

Stormwater Design Manual was updated for the first time since 2012

**\$22.4M**

spent on construction projects

**971,376**  
vehicular miles traveled

**247**  
trees trimmed



**970 DUBLIN ROAD, COLUMBUS, OH 43215**  
**614.525.3030 | [FRANKLINCOUNTYENGINEER.ORG](http://FRANKLINCOUNTYENGINEER.ORG)**